

Fldigi Configuration Check List

Version 3.1 - 08/19/2018

WA2LBE
KC2SKG

Check list for fldigi-4.0.15

flarq-4.3.6 (installed along with fldigi)

flmsg-4.0.5

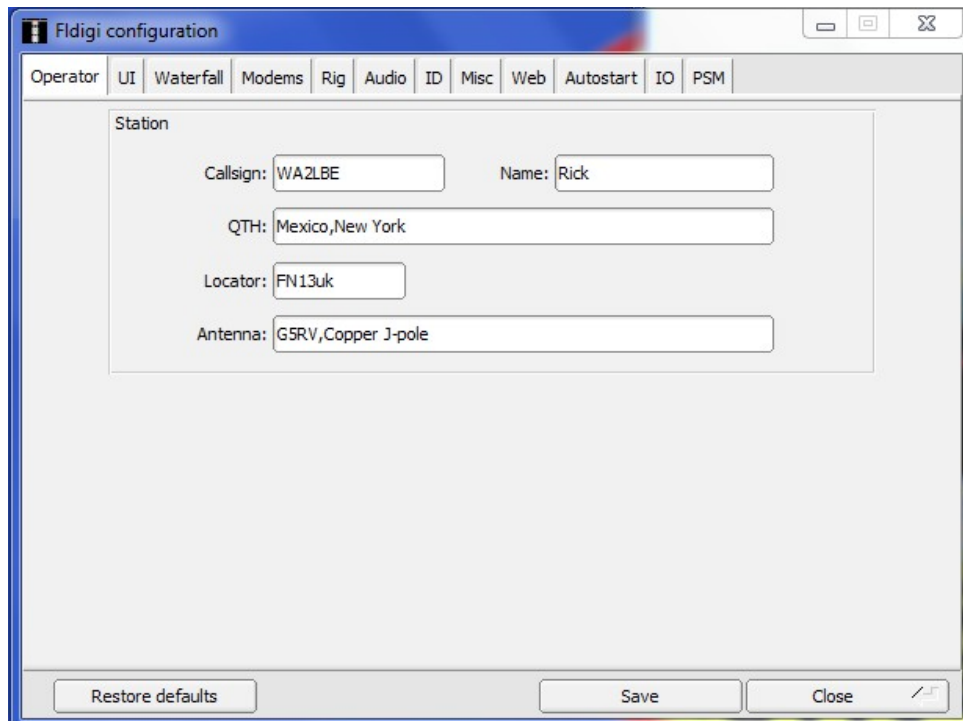
flwrap-1.3.4

flamp-2.2.03

This check list assumes you have successfully installed all the above programs.
All defaults are assumed, only those needed for RACES, have been identified

Fldigi

- Start Fldigi
- Close the Fldigi Configuration Wizard, we will be using the configure menu
If "Windows Firewall has blocked some features ..." pops up
Click> Allow access
- Configure > **UI** > Operator:
Station Callsign: <Station call sign>
QTH: <City, State-abbreviation>[where you are licensed]
Station Locator: <Maidenhead Grid Locator>
Operator Callsign: <your call sign>
Name:<Your first name>, [Optional: First and Last name.]
Antenna: <very-brief-description-of-most-used-antenna>, e.g., "J-pole"



[To be legal the **operator callsign must be changed here each time the radio operator that uses this computer program for radio transmissions, is changed.]**

- Click **Save**
- Configure>**Miscellaneous**>Misc>CPU: Use default value (unchecked) unless CPU is slow.
- Configure>NBEMS:
 - Check (enable): Open message folder.
 - Uncheck** (disable): Open in browser. (optional-depending on user)

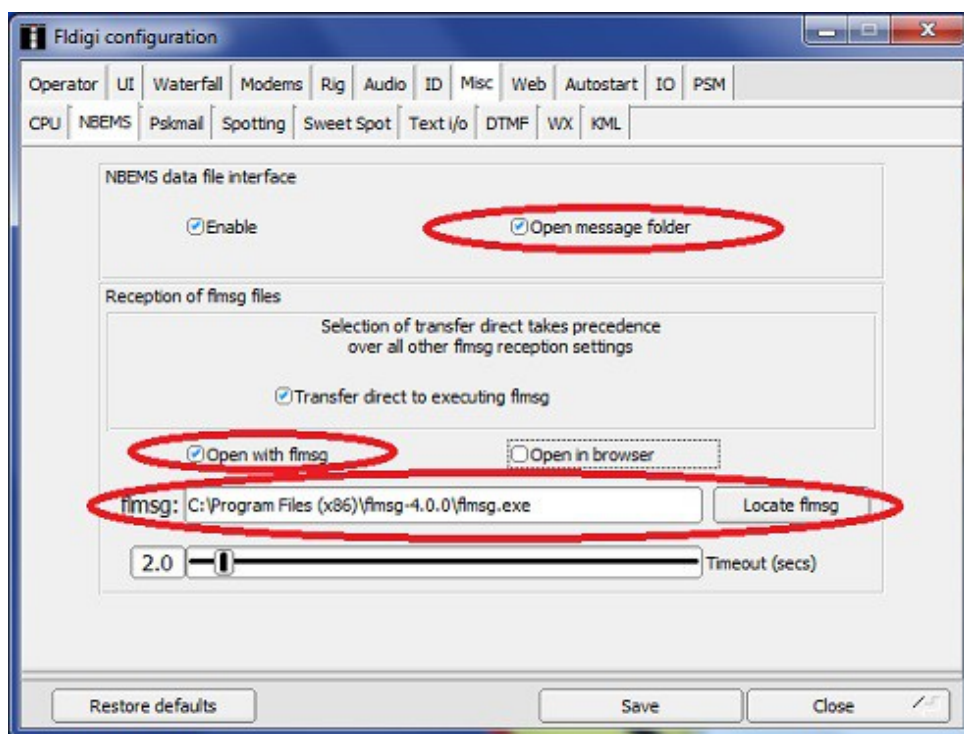
With this checked, any received message form will be displayed in the default browser suitable for printing.

Browse using "Locate flmsg" and highlight flmsg.exe application.

Click> Open

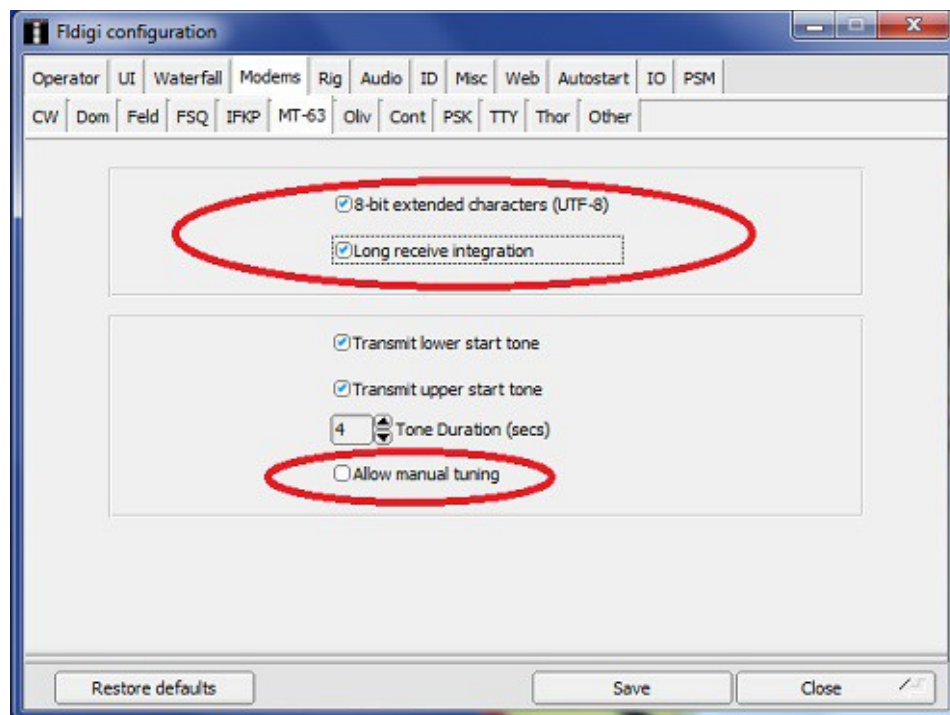
Locations based on system type: **Windows – 64 bit: C:\Program Files (x86)**
Windows – 32 bit: C:\Program Files

The FLMsg application folder label contains the version number.

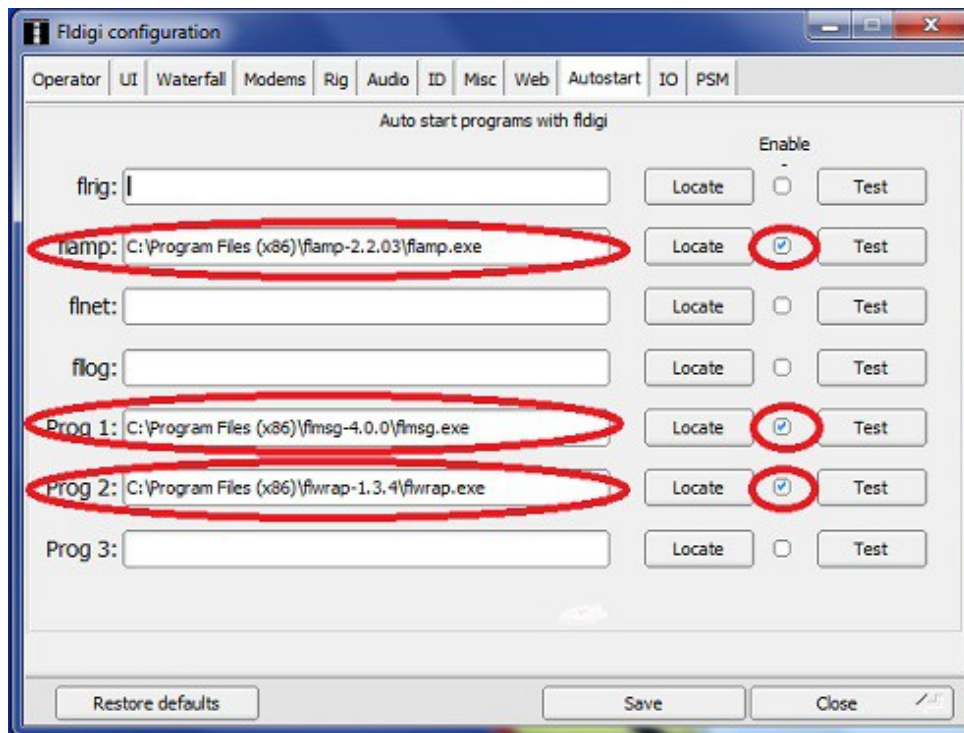


- Click **Save**

- Configure>Modems>MT-63
 Check (enable): Long receive integration.
Uncheck (disable): Allow manual tuning.

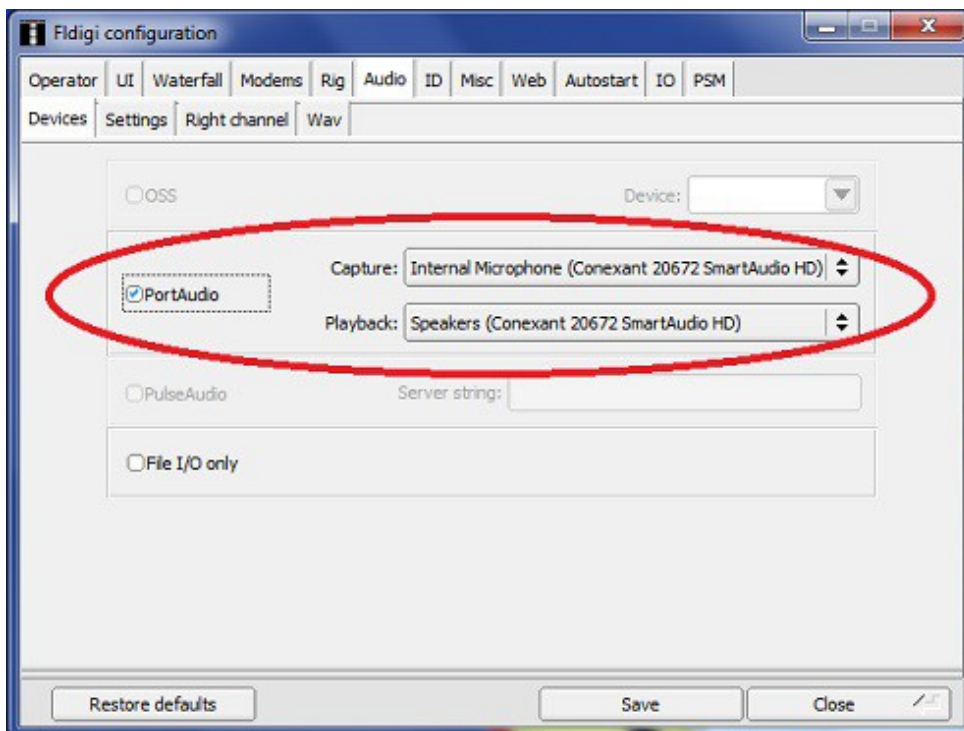


- **Click Save**
- Configure>Autostart>flamp
 Locate flamp.exe file and click Open
 Click>Enable button
- Configure>Autostart>Prog 1
 Locate flmsg.exe file and click Open
 Click>Enable button
- Configure>Autostart>Prog 2
 Locate flwrap.exe file and click Open
 Click>Enable button



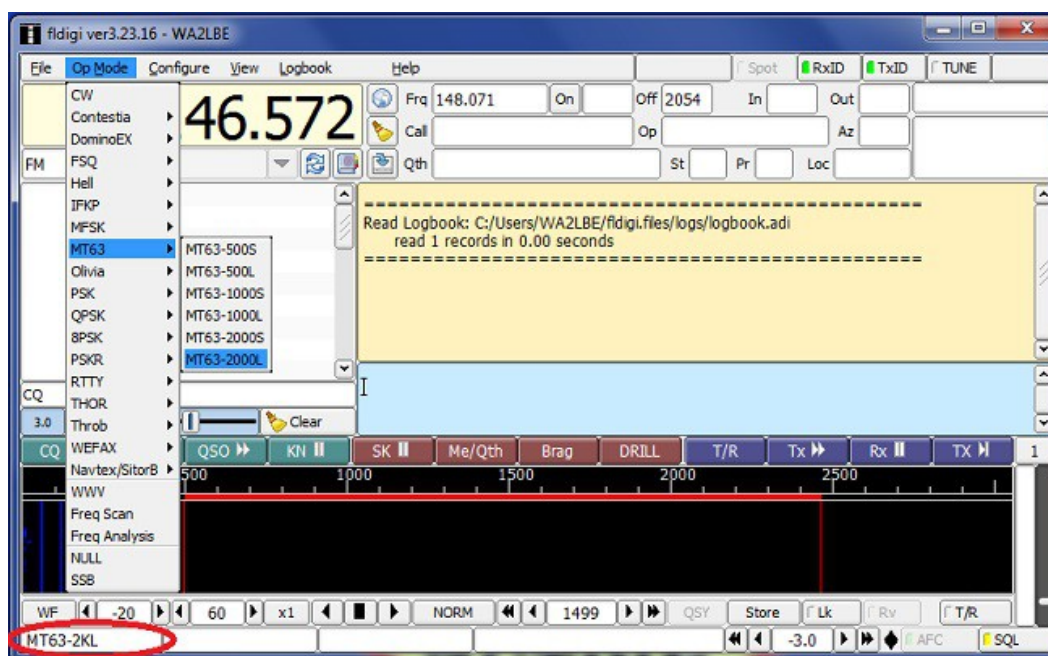
- **Click Save**
- **Configure>Audio>Devices**
Check (enable): PortAudio

For now, you will using the internal sound card, select the proper audio settings for your computer.



- **FINALLY:Click the **SAVE** button, then the **Close** button.**

- Use the main menu selection “View>Rig/Log Controls”
Select: None
- Use the main menu selection “View”, click on “View/Hide Channels”
- **Use the main menu selection “Op Mode>MT63>MT63-2000L”.**
Confirm "MT63-2KL" is indicated in lower left hand block of Fldigi



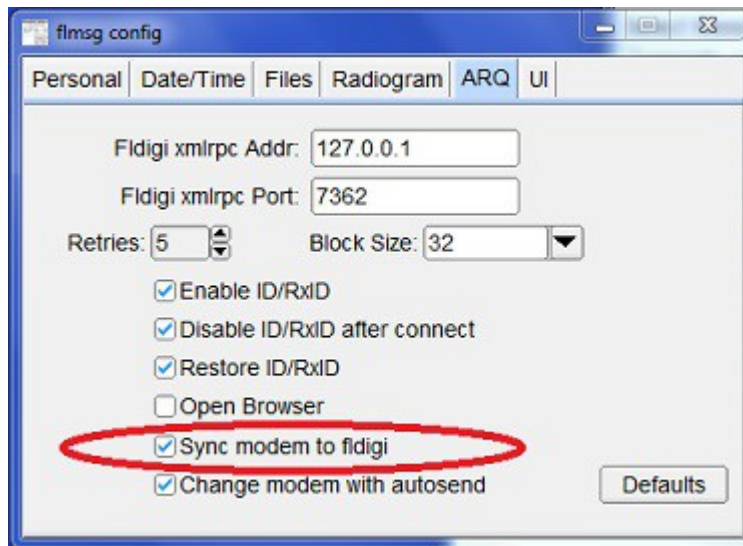
- **Use the main menu selection “Configure>Save Config.” Menu selection**
- Minimize Fldigi to taskbar

Fmsg

- Start Fmsg
- Click>”Communicator/Expert” Dialog
You may get a Security Alert that windows Defender Firewall has blocked some features. Click on “Allow access”

On the message window that opened:

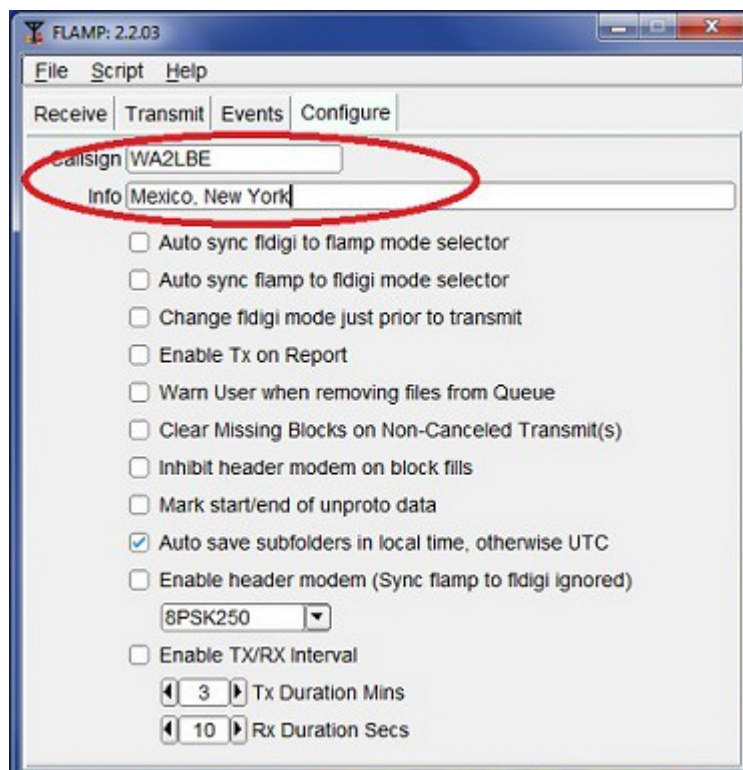
- Config>Personal data
Call: <your call sign>
Name: <Your first name>, [Optional: First and Last name.]
Addr: <Street address> [Optional]
City/St/Zip: <City, State and ZIP code> [Optional]
- Configure>ARQ (Socket in older versions)
Check (enable):Sync modem to fldigi



- Config>UI>
Check (enable):UserInterface = Expert (This will open message forms on startup)
- Close The Config window, no SAVE required
- Minimize Flmsg window to taskbar

Flamp

- Start Flamp
- Click>"Okay" on pop-up window that reminds you to enter information
- Enter Callsign and location (for "Info")
- Close Flamp window, No SAVE required

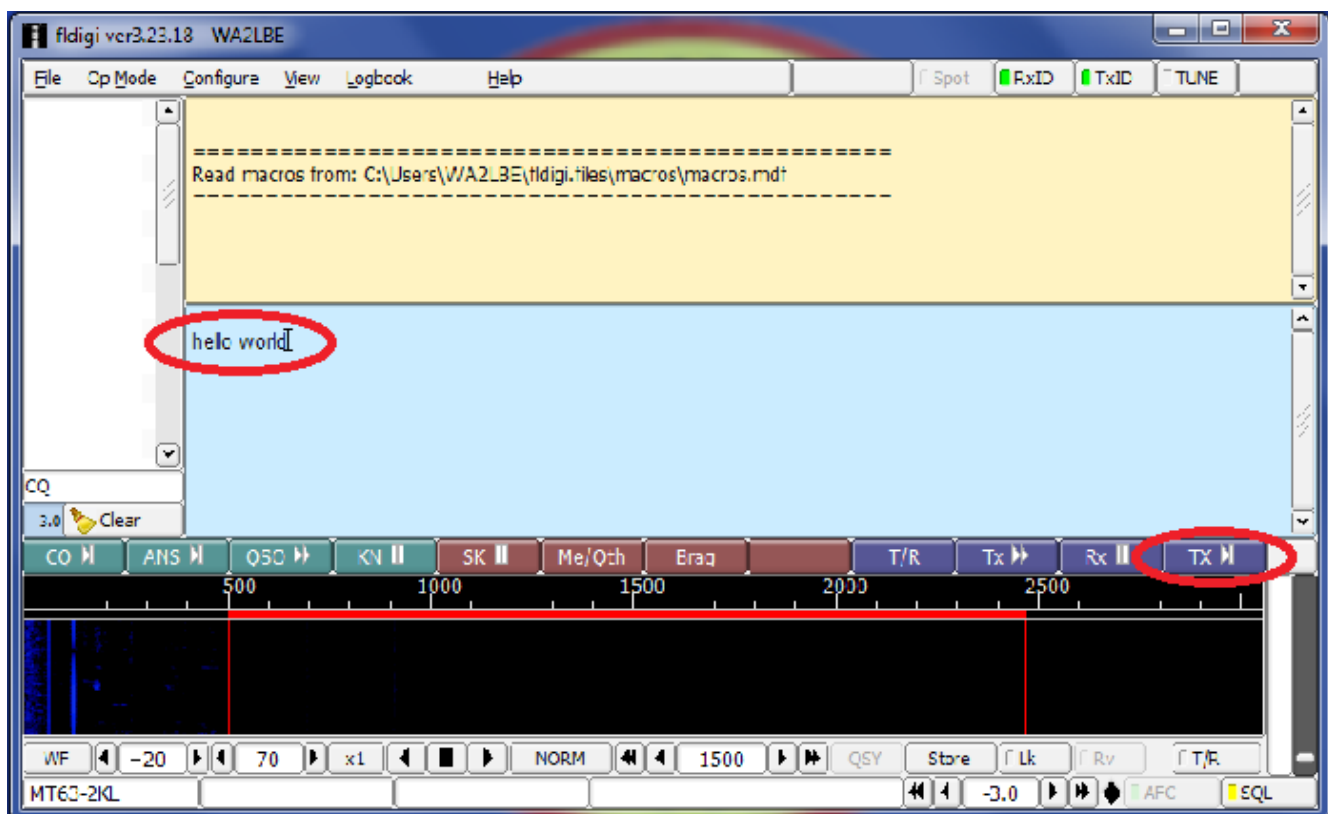


Flwrap

No setup required

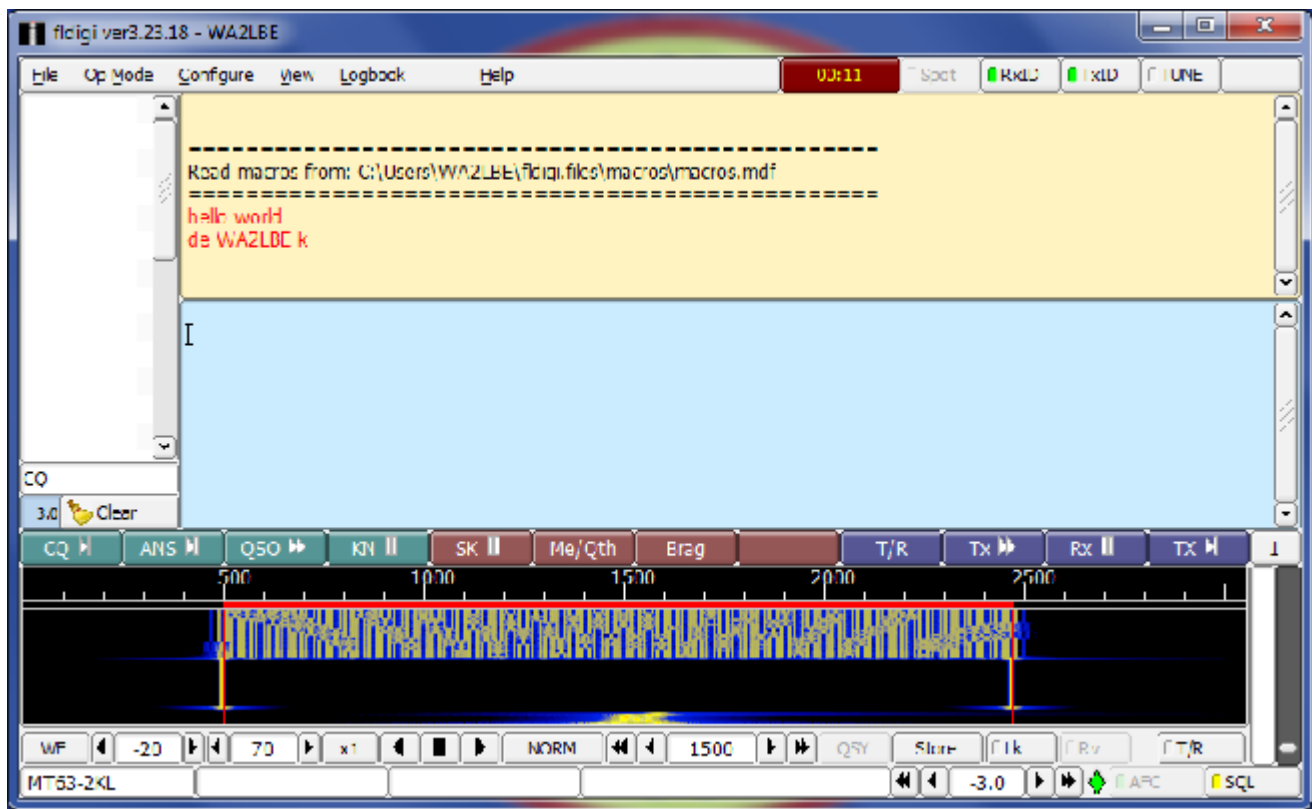
Fldigi check-out

- Close all open Fldigi windows
- Restart Fldigi
Verify fldigi, flwrap, flamp, and one flmsg form opens.
- Minimize all windows but Fldigi
- Verify that no external sound interface is connected to the computer
- Type "HELLO WORLD" into the lower BLUE Transmit pane
Click>**TX>I** (right most macro)



The message will echo into the upper TAN receive pane, in red, the BLUE will erase as it is transmitted.

The transmitted tones will show up in the waterfall, and be heard from the computer's speakers.



If problems are encountered, re-check configurations and computer sound card settings. To return a menu item back to installation values: click>Restore Defaults (or just "Defaults", on some windows)

<< You will be ready to send and receive with fldigi, once you have installed your sound interface. See you on the air >>

This checklist is for VHF/UHF operation. To avoid overheating your radio, use only enough power as necessary to maintain contact. Digital modes run 80 to 100% duty cycle.