

# Installing and configuring UZ7HO's soundmodem and EasyTerm programs for packet radio

You'd need:

Windows Computer with soundcard interface (Signalink USB or equiv.)

UZ7HO's soundmodem ver 0.97b software

UZ7HO's EasyTerm ver 0.39b software

A VHF radio with outside antenna

The software runs on Windows 10 or earlier. Don't know if it will run under Wine on linux or not.

The programs can be downloaded from <http://uz7.ho.ua/packetradio.htm>, suggest opening in a separate tab.

You want the soundmodem97.zip and easyterm39.zip files.

Below a list of files that you can download.

Soundmodem, High-Speed Soundmodem, manuals and utility for soundcard correction:

<a href="#">CHANGELOG.txt</a>	18-Dec-16 16:38	7.97K
<a href="#">hs_soundmodem15.zip</a>	25-Sep-16 03:51	452.21K
<a href="#">soundmodem97.zip</a>	14-Dec-16 15:51	458.41K
<a href="#">user_guide_v045b_EN.pdf</a>	11-Oct-13 19:13	1003.34K
<a href="#">user_guide_v045b_FR.pdf</a>	11-Oct-13 19:13	333.12K
<a href="#">utils.zip</a>	28-Feb-15 04:59	68.21K

Applications that supports Soundmodem or AGW PE:

<a href="#">checkers6.zip</a>	18-Aug-16 22:01	342.94K
<a href="#">chess10.zip</a>	18-Aug-16 22:02	355.82K
<a href="#">easyterm39.zip</a>	22-Feb-17 12:26	398.67K

I'd suggest creating a directory C:\UZ7HO and placing the contents of both .zip files there. No windows install is needed; likewise if you later decide the software is of no use to you, simply delete the UZ7HO folder and the software is gone. Open the zip files and extract the contents to the C:\UZ7HO folder.

The first time you run both programs, you'll need to configure them. If you extracted them to C:\UZ7HO, simply open that folder with Windows Explorer and double click on soundmodem.exe and Term.exe to start them.

If confronted with a Security Warning that the publisher could not be verified, click "Run"

You may get a Security Alert that Windows Firewall has blocked some features. Uncheck "Public" and check "Private" networks. Click "Allow access"

## Soundmodem:

Click "Settings" then "Devices", make sure the correct "Output and Input devices" are selected (USB Audio CODEC for Signalink), and that "Single channel output" and "AGWPE Server Port 8000" is checked and the correct value. "KISS Server Port" doesn't matter unless you'll be using a separate program that "talks KISS such as Winlink Express".

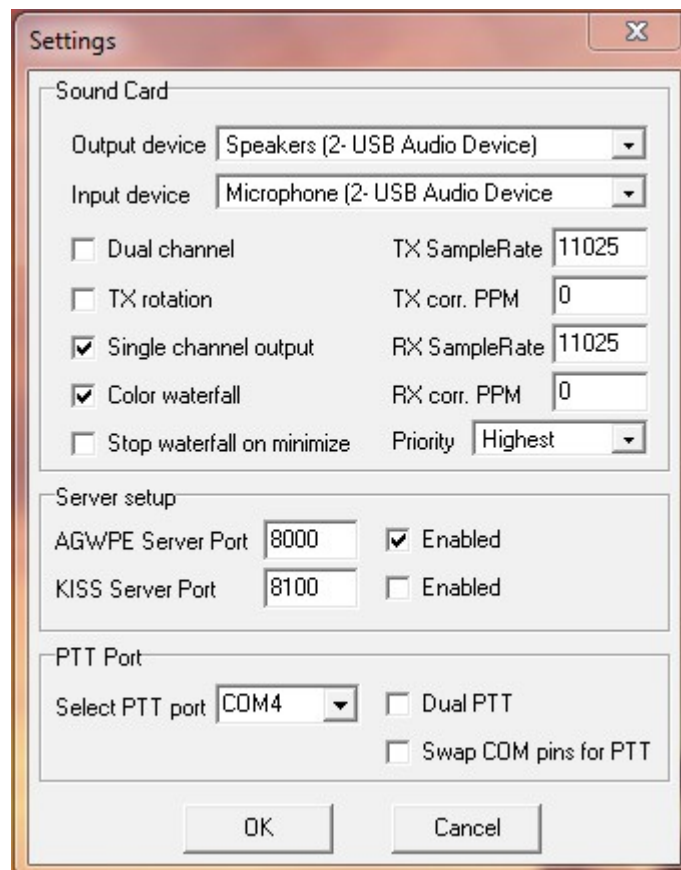
Checking "Color waterfall", makes it easier to set audio input level.

Checking "Stop waterfall on minimize" will lower CPU usage.

"Select PTT Port" should be NONE, with no boxes checked for Signalink USB or equiv, otherwise enter the comm port of your serial connection.

Uncheck "Dual PTT"

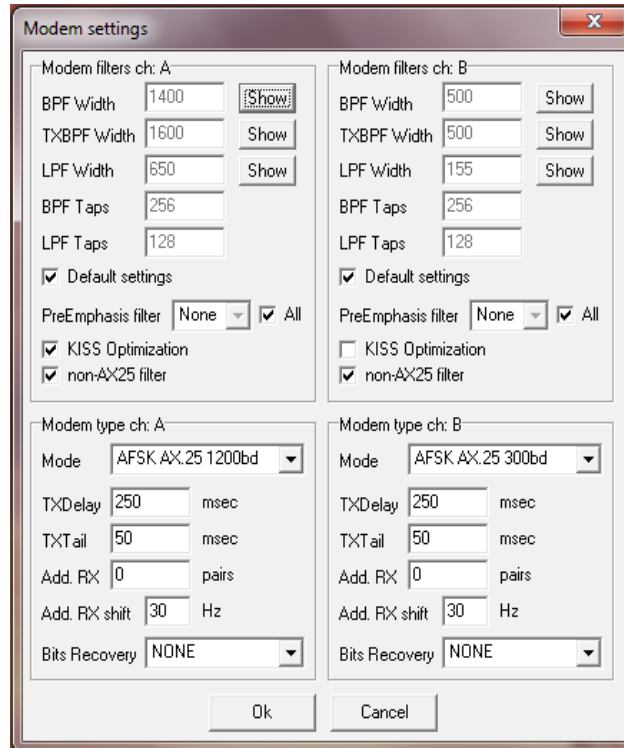
Then click "OK"



(I use a Sound Interface, thus COM4)

Click "Settings" then "Modem", Check "Default settings". Check "KISS Optimization" and "non-AX25 filter".

Then click "OK"



For general packet operation, use "AFSK AX.25 1200bd", the top choice.



You will need to close and then restart Soundmodem for the changes to be in effect.

### EasyTerm:

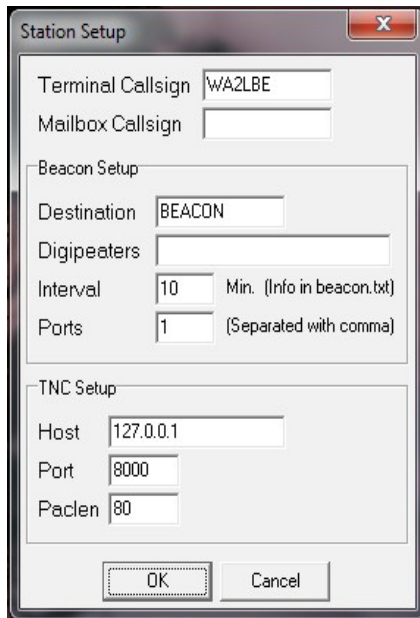
Start EasyTerm by double clicking Term.exe in the C:\UZ7HO folder. Then click on "Settings" and then "Station Setup".

Enter your callsign, TNC Setup should already have "Host" 127.0.0.1; make sure "Port" is 8000.

We're not using beacons at this point so ignore that part.

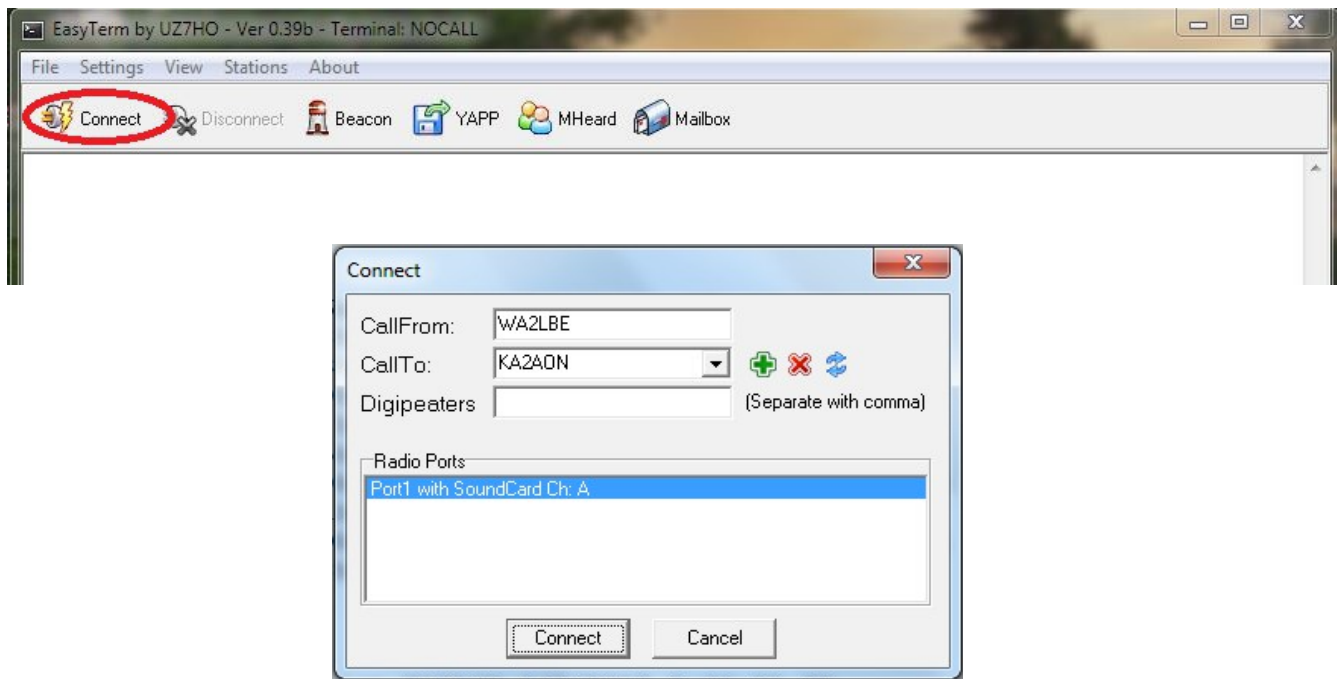
Then click "OK".

You will need to close and then restart EasyTerm for the changes to be in effect.



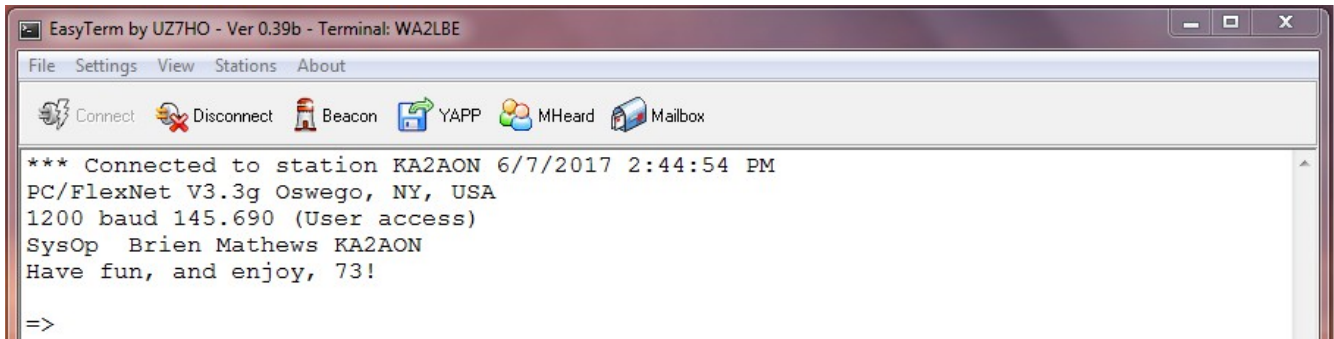
At this point, both new programs should be running. Make sure your soundcard is connected to your radio, it's on and set to 145.690 (KA2AON) for 1200 baud packet, simplex and you're ready to go.

You'll use EasyTerm to make a connection by clicking "Connect" and then putting KA2AON in the "CallTo:" box, with your soundcard listed in the Radio Ports box.



Click on "Connect"

You should then see a sign-on from the BBS like this:



```
EasyTerm by UZ7HO - Ver 0.39b - Terminal: WA2LBE
File Settings View Stations About
Connect Disconnect Beacon YAPP MHeard Mailbox
*** Connected to station KA2AON 6/7/2017 2:44:54 PM
PC/FlexNet V3.3g Oswego, NY, USA
1200 baud 145.690 (User access)
SysOp Brien Mathews KA2AON
Have fun, and enjoy, 73!
=>
```

While using EasyTerm, you can minimize Soundmodem.

Note that all commands sent from this point forward are followed by the pressing Enter Key on your keyboard. These are text mode programs and seldom support mouse clicks. If you don't press enter, nothing will happen until the connection eventually times out from lack of activity. A very boring wait...

Of course, it will have your call rather than mine and since it's your first connect. Type H for help and you'll see available commands. at this point you can experiment with the commands.

3/12/2017 WØKAH  
Copyright St. Charles Amateur Radio Club 2017

Reprinted with permission

Changes were made to reflect my settings, from default settings, and to reflect our digipeater Rick WA2LBE